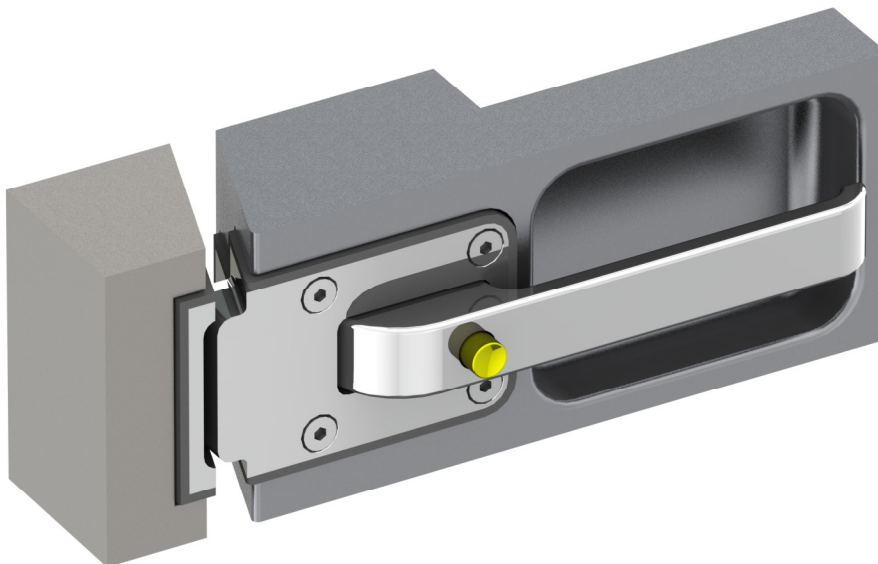


The Structor lock type 330 is primarily designed for use in bulwark doors on board of luxury yachts. It has a weldable aluminium housing that leaves the door body airtight. This lock is available for inward and outward opening doors. Picture above shows an optional child lock operated with a separate key. A push button childlock can also be supplied.

Delrin separators are used throughout the design so no galvanic corrosion can take place. All visible stainless steel parts are mirror polished.



Please consult us for CAD drawings, 3D models or alternative applications.